



LED Graphic Message Display



## Overview

Sitech Systems (NZ) Ltd was established back in 1988 and evolved from Waikato Projector Services in response to local area needs for an audio and visual equipment supplier.

Sitech Systems have since established itself as one of the country's most innovative integration technology suppliers, offering complete Audio and Visual solutions at the forefront of technology to the corporate, tertiary, and education market sectors in New Zealand for over 30 years.

We know that one system does not fit all, each system is designed to fit exactly what our client's needs are. We design systems that include IP network attached paging devices and door access control. We ensure all systems work together and meet your specific requirements.

We provide systems that include:

- Full Auto-Dimming Functionality
- Fully Integrated Software
- Wi-Fi / LAN / 4G Connectability
- Engineering drawings and plans for footing – to Council specification

## Consultation

When we provide a Graphic Message LED Display, we analyse and determine the correct screen system required. We review the environment and define the best display pitch and plinth design to suit your requirements. This also includes vandalism protection for your new sign.

### Decision Assistance



### Review Alternative Solution

Once we have completed the consultation phase, we work with you to review the pros and cons of several solutions, including a review against the budget available.

We make sure that you understand all the possible solutions, so you can make an educated decision on the best choice. For example, we review the various operating systems that you can choose from as well as the software that will do exactly what you need.

We review your return on investment, so you can understand the benefits and value of all the solutions available.



## Systems Integration

### Make sure it all goes together

When necessary, we integrate multiple systems and software. We provide integration that assures all parts of the system work together seamlessly.



### Getting the System Installed and Working

Once you have decided on the right solution, we help you determine the best time to install the system.

We will make sure that you have the best resources available. We install all over New Zealand.

### Technical Support

We assure you that the equipment you purchased operates as expected and that you get full use of all the components.

We are the first people you call to get help.





## Graphic Message Display System Summary

Now it's easier than ever to install a Graphic Message Display system. It can be used to provide emergency notification to the campus or specific messages to staff, students and parents.

ColorLight software runs on your PC manages the system and provides digital picture quality wherever you need it.

### Typical Applications

- Advertising Sport Days
- Up and Coming Events
- Teacher, Parent Interview Time Tables
- Generate additional revenue through company advertising
- Student Achievement Awards
- Fund Raising Events
- Shopping Malls
- Bus & Railway Stations
- Outdoor / Indoor Stadiums
- Airport Terminals
- Control Centres
- Live Concerts



Sitech Systems (NZ) Ltd is committed to the design, supply, and installation and technology service of your new LED display.

We focus on transparent LED and flexible modular systems. This enables Sitech Systems to provide a fully integrated LED display system and full solution for our customers.



## Graphic Message Display System Overview

### Standard Outdoor Cabinets

CoreTech SMD series standard modules help clients to design any size display that suits their needs. Standard 320m x 320mm module design, makes for fast installation and easy maintenance with low cost of operation.

With a high refresh rate (1920hz), adjustable colour temperature, and automatic brightness adjust, these will offer a high quality natural picture.



### A Package of Optional Solutions

Asynchronous or Synchronous system available, either by Camera, Digital TV, Cloud Broadcast Control, Internet Connection, Wi-Fi, 4G.

### Protection Class

Protection rate IP65 enables the display to be used for direct outdoor installations. Anti-UV mask, making for a flat distortion-free display.

### Pixel Options

Available in P8, P6, P5, P4.4, P4.







## C-Fit P4,5,6,8,10 Outdoor Multi-functional Advertising LED Display

### Advantages



1. Thinner and lighter: 15kg/m<sup>2</sup> lighter and 20% thinner than iron cabinet, saving transportation space, reducing delivery weight and bearing requirements of buildings and steel structures.
2. Multi-function: advertising fixed installation, or adding a hanging bar, connectors and fast lock for rental, adding rubber cushion and bracket for perimeter display.
3. Cost-effective: magnesium alloy cabinet, corrosive resistance.
4. Standard modules: P4 to P16 outdoor modules available.

### Multi-function

Advertising fixed installation, adding flying bar, connectors and fast lock for rental, adding rubber cushion and bracket for perimeter display.





## C-Smart P4,5,6,10 Outdoor LED Sign Non-Cabinet

C-Smart is a simple integrated front and rear serviceable LED screen. No cabinet design, this only needs a simple frame to hold the modules, which reduces the cost of the installation.

### Advantages:



1. Fully modular design for easy assembly and repair.
2. Light weight: weight of modules is 3.55kg/pcs.
3. Does not require space on the back of frame for maintenance.
4. Built-in receiving card and power supply with data memory.
5. Fully sealed components, simplified waterproof connections.
6. Fan-less nature cooling.
7. Maximum brightness
8. Low power consumption.



### Application:

Used for monument signs, led message centers, pole signs and pylon signs, billboards and mass transportation depots.

### Protection Class

Protection rate IP65 enables the display to be used for direct outdoor installations. Anti-UV mask, making for a flat distortion-free display.



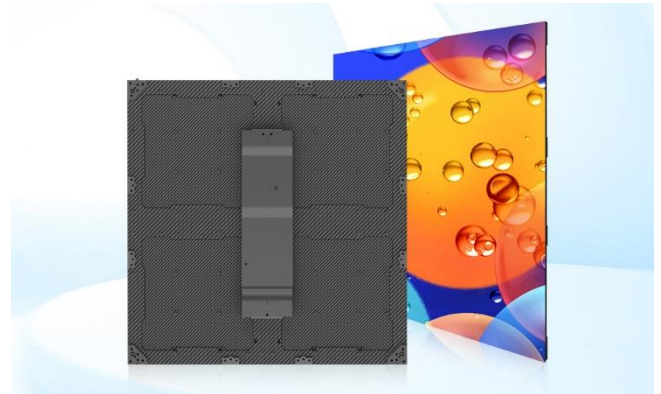


## C-Vent P16.67,25 Outdoor LED Curtain Screen

### Ventilated Cabinets

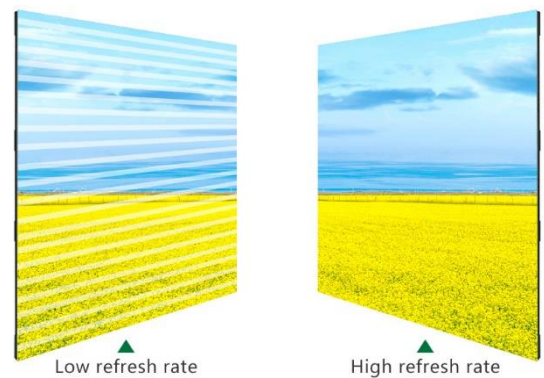
Outdoor HD LED display ventilated modules allows for energy savings of up to 50%.

The ventilated design takes away the issues with other modules by not requiring the use of fans for cooling.



### Protection Class

Protection rate IP65 enables the display to be used for direct outdoor installations. Anti-UV mask, making for a flat distortion-free display.



### A Package of Optional Solutions

Asynchronous or Synchronous system available, either by Camera, Digital TV, Cloud Broadcast Control, Internet Connection, Wi-Fi, 4G.

### Pixel Options

Available in P16, P10





## Standard Indoor Cabinets

### C-Max P2.5,3,3.3,4 Indoor Commercial LED Display

Sitech Systems HD, C-Max & Leopard Series, is the world's first wall-mounted small pitch LED display.

With better performance, higher contrast and refresh ratio enables the use of 4K video formats to enhance your viewing pleasure.

Leopard Series supports front-service maintenance module for ease of service and component replacement.



## Perfect Video Projector or LCD replacement



Fixed installation or pull-down, easy to install, save both time and labour. Perfect 16:9 picture format.

Simple to handle, light and easy to carry.

### Applications:

- Halls
- Conference Rooms
- Auditoriums
- Exhibition Presentations
- Command and Monitor Systems

## Pixel Options

Available in P2.9, P2.5, P1.9, P1.5, P1.2



## Transparent Wall LED Display

### C-Trans P5.35 Outdoor Transparent LED Screen



Transparent wall series LED display used for large glass areas where natural light is still an important aspect of your working environment.

With up to 80% transparency rate, designed for high impact areas, keeping natural light flowing into important areas, and minimises the negative impact on the appearance of the building.

#### Benefits and Features

- Light Weight 14kg/sq<sup>2</sup>
- High Transparency
- Fast lock system, ensures fast installation
- With 6000nit brightness, this insures a perfect visual performance



## Applications

- Shop Windows
- Lobby / Showrooms
- Auditoriums
- Conference Centres





## C-Cube indoor LED display p2.5 Video Panel

### Features



1.Strong visual impact: 360 degree viewing angle, play videos in multiple directions to attract audiences and make your advertisements more visually appealing.

2.Simple play: Supports one-click upload and playback via mobile APP, and enables remote seamless switching of advertising content, making it simple and convenient.

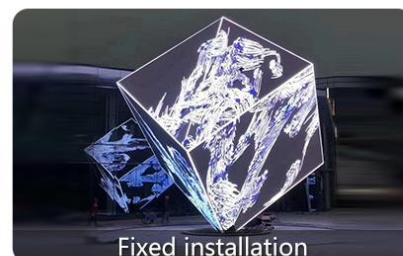
3.Assembly-free : No assembly is required, simple installation, and ready to use.

4.Colourful: The cube LED display has a wide colour gamut, which perfectly displays a fully immersive visual impact for your advertisements.

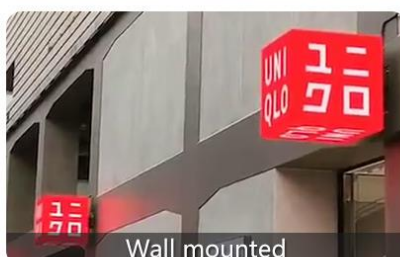
5. It is suitable for museums, science and technology exhibition halls, gymnasiums, hotels, shopping malls, bars.



Floor mounted



Fixed installation



Wall mounted



Hanging installation





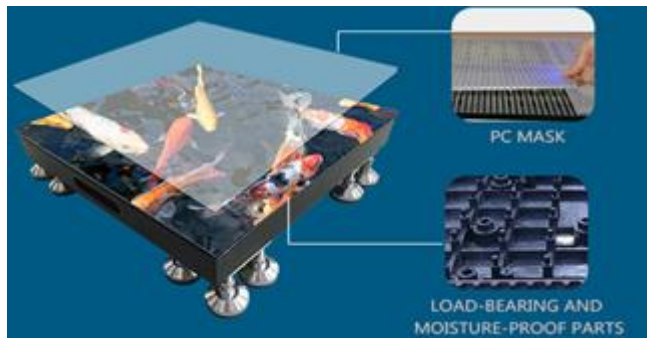
## P3.91 indoor floor tile screen HD LED display

### Features

1. Waterproof and moisture-proof: The bottom shell, mask, power cable and signal cable of the indoor floor LED screen module are all equipped with waterproof and moisture-proof materials, made of raw materials with low moisture absorption.

2. Anti-slip and wear-resistant: The mask of the intelligent interactive floor Led screen is made of imported PC material, which has high wear resistance and flexibility, as well as good resistance to high and low temperatures. The mask has better anti-slip and weight-bearing functions.

3. Super load-bearing: Each component of the intelligent interactive LED floor screen can have an ultimate load-bearing capacity of up to 2 tons per square metre.



4. Mute heat dissipation: The power box adopts a special heat dissipation device to achieve a better mute heat dissipation function.



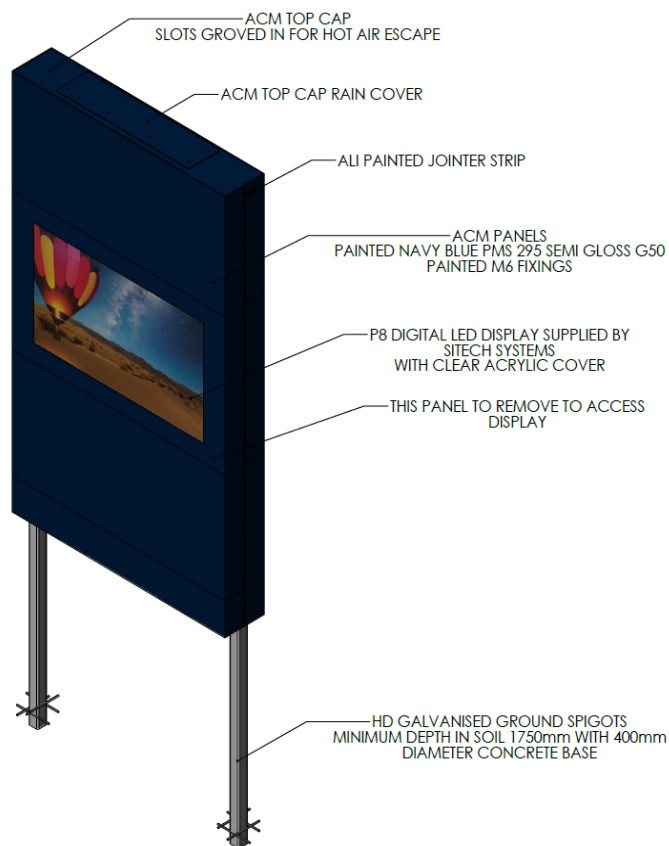
### High Load Bearing Capacity

High-strength PC masks and impact resistant metal shell design, can handle up to 2 tons per square metre of loading





## Graphic Message Display Plinth Overview



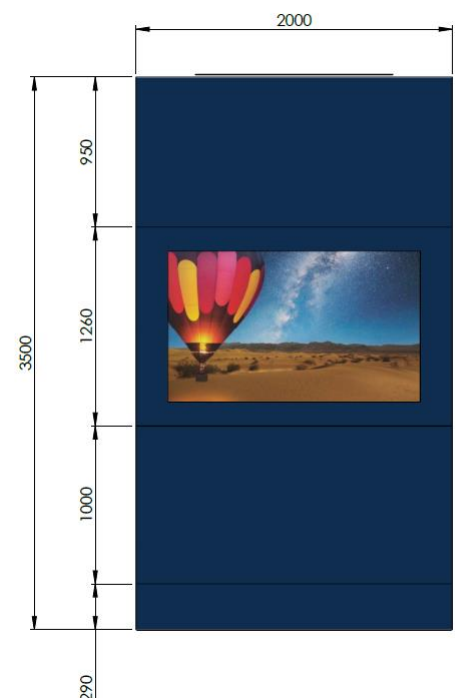
With many options available, Sitech System can design with complete full ACM (Aluminium Composite Material), half ACM or a basic frame.

We offer full specification drawings to meet your budget and design ideas.

With or without full graphics, or painted with your required corporate colours.

### Features Include:

- Full Install and completed vinyl graphics
- PS-1 Engineer Report
- Full Auto Dimming
- Professional Software
- Engineering Drawings – to Council Specifications







## Graphic Message Display Software Overview

**Colorlight** Software is a professional LED control system and focus on LED display control. The ColorLight brand is synonymous around the world and has been used in world-famous events, such as.

- Olympic Games
- World Expo
- FIFA World Cup



LEDVision from Colorlight is the dedicated software used to control and play LED screens. This uses advanced technology with automated powerful control functions, high performance, excellent operating interface and is easy to learn.

### Functions include

- 24/7 Scheduling of Material
- Full Auto-Dimming Control
- On/Off and Sleep Mode
- System operating management system

## Advanced Solution for High-End Projects

4K Resolution - Capable of receiving up to 3840 x 2160 resolution at 60Hz frame rate

High Dynamic Range - 12bits depth colour input with self-adaptive frame rate from 60Hz to 120Hz

Low Latency - Perfectly smooth video with extremely low delay frame transmission

Video Processing - Broadcast level quality scaling - Picture in Picture, free play window placement

Calibration System - Brightness and colour calibration at a pixel level





## Why Use Sitech Systems Graphic Message Displays?



- High Refresh Rate (1920hz) flicker-free
- Auto-Dimming Function
- High Brightness from 5500cd/sqm<sup>2</sup>
- Provides centralised messaging from your Windows PC
- Multiple Communication Protocols
- Whether your application is a parking facility, educational institution, retail, high-security port authority, and many other applications, this is the best system for you.

An End to End Integrated Solutions Company

### **Auckland:**

Glenn Dixon 021 405 285

### **Head Office:**

Sitech Systems (NZ) Ltd

67 Kent Street, Frankton

P.O. Box 5551

Hamilton 3242

### **Palmerston North:**

Jason Woods 021 357 226

### **Wellington Office:**

Heath Wine 021 460 501

Unit 14, 4 Northpoint St,

Plimmerton

Porirua City, 5011

04 567 9324